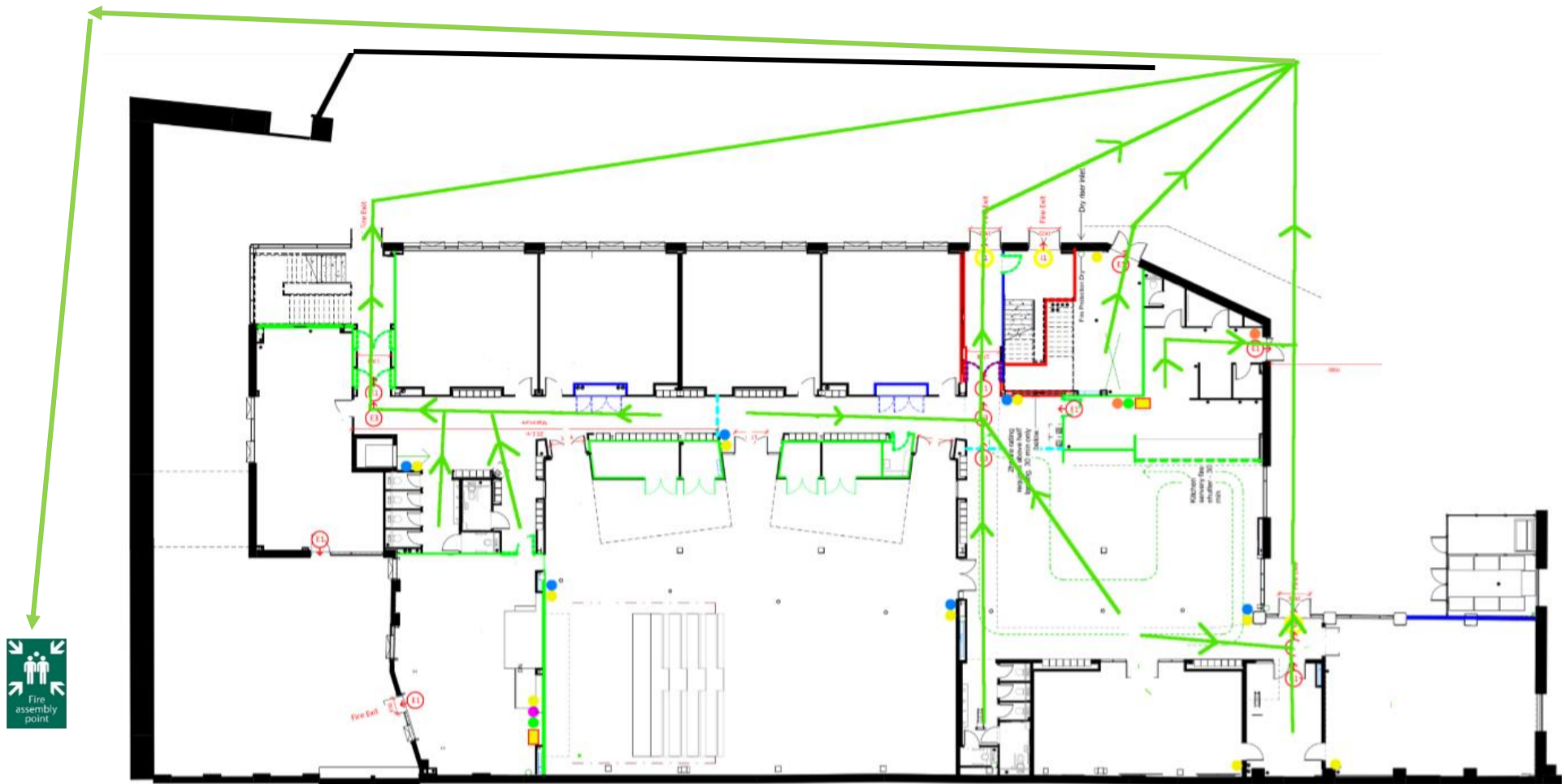


## EMERGENCY EVACUATION PLAN



### **EVACUATION ASSEMBLY POINT ENTRANCE TO FRONT WALKWAY**

**If evacuated from the rear of the building, follow the pathway to the left up past the Boilershop to Forth Road then left and along past the front of the hotel until you reach the entrance to the UTC walkway. This is the assembly point.**

### **INSTRUCTIONS**

#### **EVACUATION PROCEDURE**

- Act on instructions of Fire Wardens
- Leave the Building by the nearest Emergency Exit
- Do NOT collect personal belongings
- Do NOT run, push or overtake
- Do NOT use the passenger lift
- Proceed to the designated assembly point
- Do NOT re-enter the building until advised it is safe to do so

#### **DISCOVERY OF A FIRE OR OTHER EMERGENCY**

- Activate the alarm at the alarm call points
- Close windows and doors if safe to do so
- Use the firefighting equipment to aid evacuation only
- Report for roll call at the Assembly Point